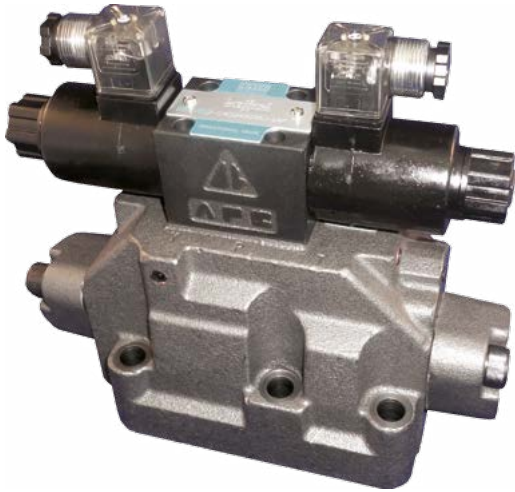


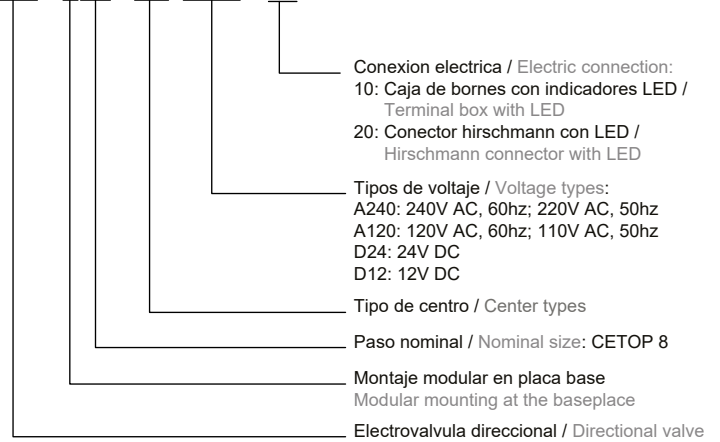
# Indice / Contents

Válvulas CETOP 8 / CETOP 8 Valves.....			43
SWH G06.....	44	MT 06 A/B/W.....	47
MPR 06.....	46	MPC 06.....	48
Válvulas CETOP 10 / CETOP 10 Valves.....			49
SWH G10.....	50		

# SWH G06



**SWH - G06 - C2 - A220 - 10 - 31J**





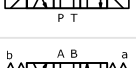

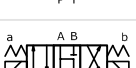




## Datos Principales Main Data

Temp. de trab. / Working Temp: 5°C - 60°C  
Visc. de aceite / Oil viscosity: 15 - 300 cst  
Filtración / Filtering: 25 micras

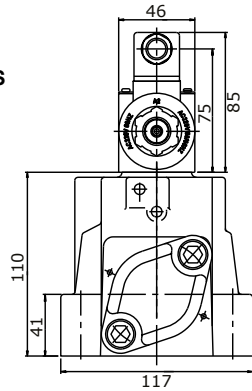
Presión de trabajo (P/A/B) Work Pressure	315 bar
---	---------

Éstandar Standard		Inversa Inverted	
Esquemas Schemes	Referencias P/N	Esquemas Schemes	Referencias P/N
	C2B		C2BS
	C3B		C3BS
	C4B		C4BS
	C40B		C40BS
	C5B		C5BS
	C6B		C6BS

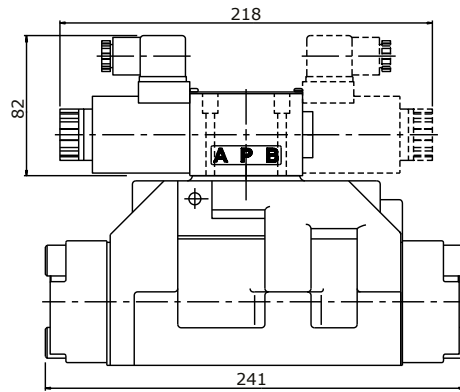
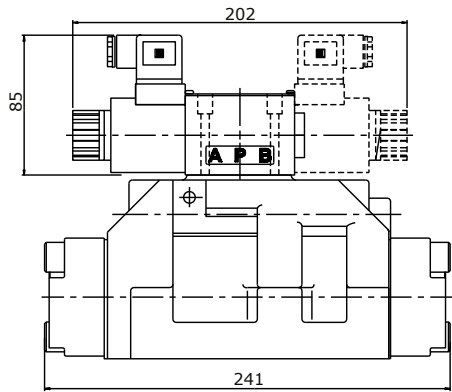
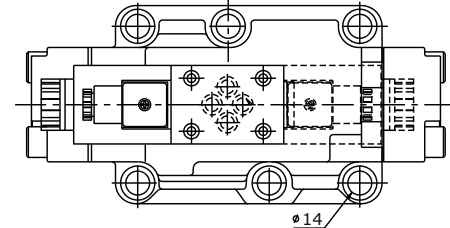
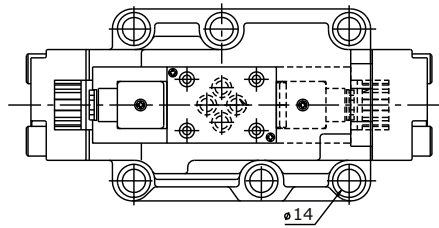
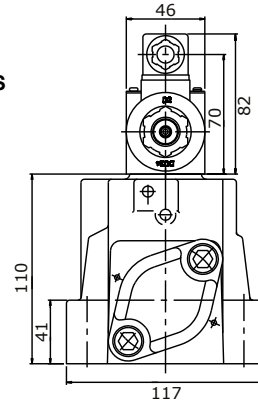
	Esquemas Schemes	Referencias P/N	Caudal Máx. Max flow
2 posiciones centrada por muelle		SWH-G06-B2	30 - 63
		SWH-G06-B3	
2 positions spring-cente- red		SWH-G06-B20	
		SWH-G06-C2	
3 posiciones centrada por muelle		SWH-G06-C3	
		SWH-G06-C4	
		SWH-G06-C40	
3 positions spring-cente- red		SWH-G06-C5	20 - 40
		SWH-G06-C6	

# SWH G06

CON SOLENOIDES  
AC (PILOTO)



CON SOLENOIDES  
DC (PILOTO)



# MPR 06



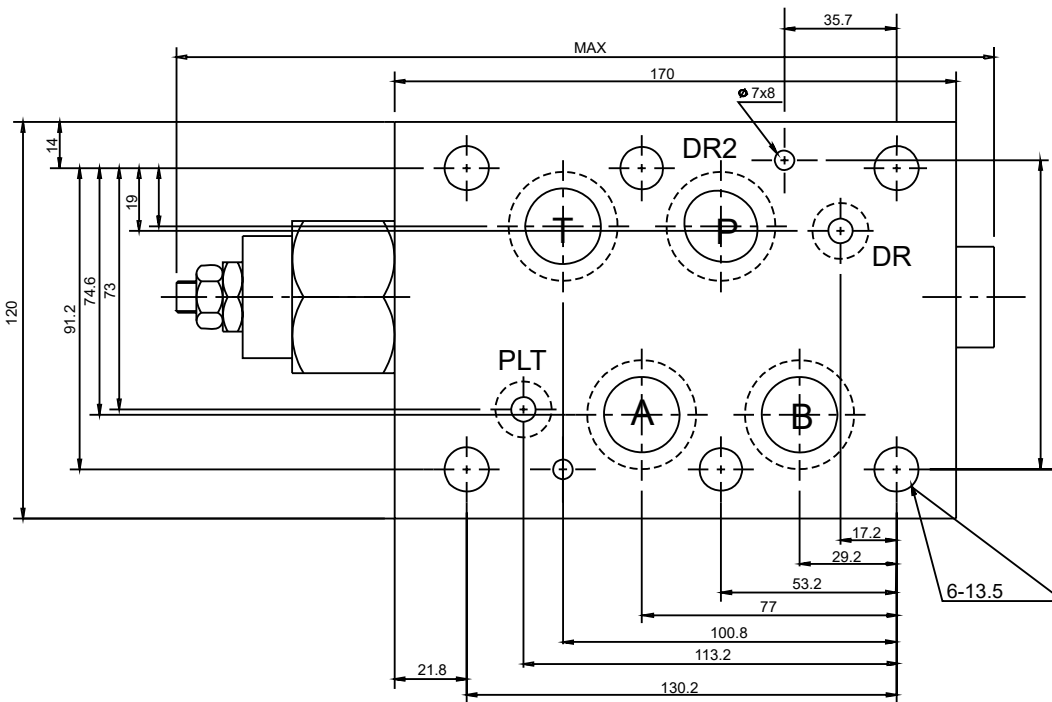
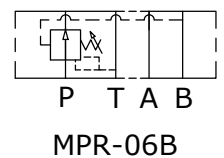
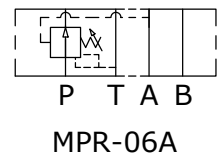
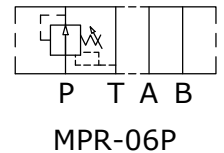
**MPR - 06 P - K - 0 - 30 - N**

- Sin código : con toma de manómetro rosca standard  
Without code: with standard thread gauge
- Código N : con toma de manómetro rosca npt  
N: with npt thread gauge
- Numero de diseño / Design number
- Rango de ajuste de presión / Pressure adjusting range
  - 0 : 1,5-35kgf/cm<sup>2</sup> (20-500psi)
  - 1 : 8-70kgf/cm<sup>2</sup> (120-1000psi)
  - 2 : 35-140kgf/cm<sup>2</sup> (500-2000psi)
  - 3 : 70-210kgf/cm<sup>2</sup> (1000-3000psi)
- Mando de regulación / Control knob
  - K: con pomo / with knob
  - Sin código: con tornillo de regulación / No code: with adjusting screw
- Control de presión / Pressure control
  - P : Línea P / P Line
  - A : Línea A / A Line
  - B : Línea B / B Line
- Dimensionado de roscas / Thread size  
06 : 3/4"
- Valvula reductora de presión modular  
Modular pressure reducing valve

## Datos Principales Main Data

Presión operativa máxima / Maximum working pressure: 250 kgf/cm<sup>2</sup>  
Caudal Máximo / Max flow: 50LPM (13,1 GPM)

Viscosidad del aceite / Oil viscosity: 35 cst (175 ssu)  
Temperatura / Temperature: 50° c ( 122° f )



### MT 06 A/B/W



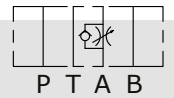
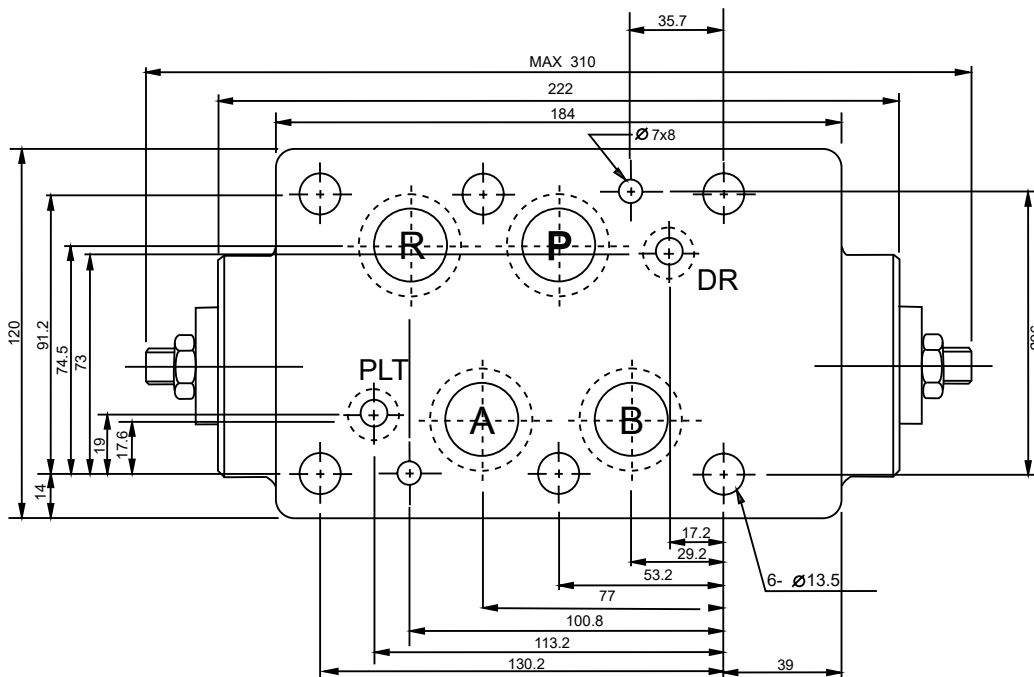
**MT - 06 W - K - I - 30**

- Numero de diseño / Design number
- Direccion de la regulacion del caudal / Flow regulation direction  
I: en entrada / at input  
Sin codigo: en salida / at output
- Mando de regulacion / Control knob  
K: con pomo / with knob  
Sin codigo: con tornillo de regulacion / No code: with adjusting screw
- Regulacion de caudal / Flow control  
A: Linea A / A Line  
B: Linea B / B Line  
W: Lineas A Y B / A and B lines
- Dimensionado de roscas / Thread size  
06 : 3/4"
- Valvula reguladora unidireccional modular  
Modular unidirectional flow regulator

### Datos Principales Main Data

Presion operativa maxima / Maximum working pressure: 250 kgf/cm<sup>3</sup>  
Caudal Maximo / Max flow: 50LPM (13,1 GPM)

Viscosidad del aceite / Oil viscosity: 35 cst (175 ssu)  
Temperatura / Temperature: 50° c ( 122° f)



P T A B  
MT-06A



P T A B  
MT-06A



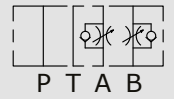
P T A B  
MT-06W



P T A B  
MT-06A-I



P T A B  
MT-06B-I



P T A B  
MT-06W-I

# MPC 06



**MPC - 06 W - 30**

- Numero de diseño / Design number
- Posicion del antirretorno / Non-return position  
A : Linea A / A line  
B : Linea B / B line  
W : Lineas A Y B / A and B lines
- Dimensionado de roscas / Thread size  
06 : 3/4"
- Valvula antirretorno pilotada modular CETOP 3  
CETOP 3 piloted modular check valve

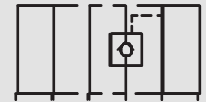
## Datos Principales Main Data

Presion operativa maxima / Maximun working pressure: 250 kgf/cm<sup>3</sup>  
Caudal Maximo / Max flow: 50LPM (13,1 GPM)

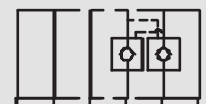
Viscosidad del aceite / Oil viscosity: 35 cst (175 ssu)  
Temperatura / Temperature: 50° c ( 122° f)



P T B A  
MPC-06A



P T B A  
MPC-06B



P T B A  
MPC-06W

