

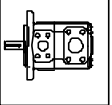
---

# *MOTORS*

---

- MHP motors

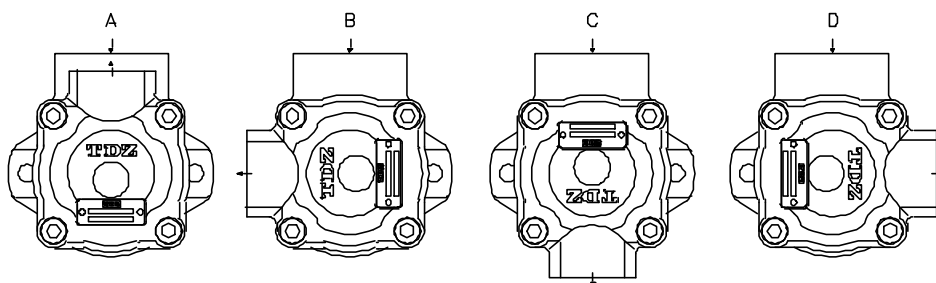
**Mt**



## VANE MOTORS CODE

<u>F3</u>	<u>MHP</u>	<u>2</u>	<u>10</u>	<u>D</u>	<u>1</u>	<u>A</u>
1	2	3	4	5	6	7

- 1 - "F3" means special seals for fire-resistant fluids. Omit if not required.
- 2 - **Motor type:**  
MHP = 10 vanes motor, mobile and industrial use, metric threads.
- 3 - **Motor model:**  
Models 2.
- 4 - **Flow:** In litres per minute at 1000 rpm and 7 bar.
- 5 - **D = Right-hand** direction of rotation (Clockwise).  
**Y = Left-hand** direction of rotation (Counterclockwise).  
(To check the direction of rotation view from the shaft end).
- 6 - **Shaft type:** See on each motor model information.
- 7 - **Outlet position from the shaft:**  
A: In line with inlet.  
B: 90° on the right from inlet (90° clockwise from inlet).  
C: 180° from inlet.  
D: 90° on the left from inlet (90° counterclockwise from inlet).

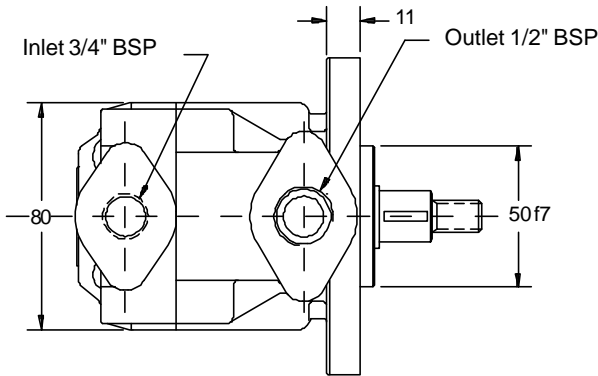
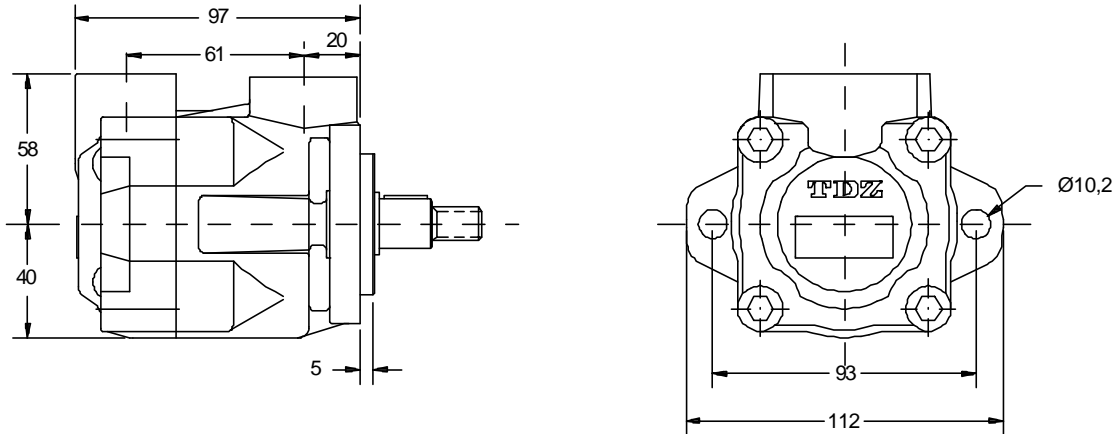


# VANE MOTOR TYPE MHP-2

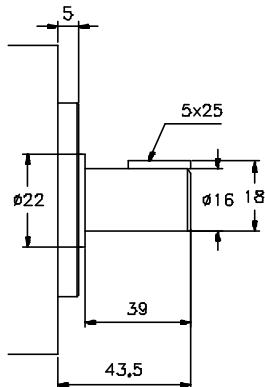


	FLOW					SPEED (rpm) (3)			PRES. (Bar)		CONNECTION		WEIGHT (Kgs.)
	7	8	10	12	15	Mín.	Máx. Contin.	Máx. Intermit.	Contin.	Intermit.	Inlet	Outlet	
Lts. a 1000 rpm	7	8	10	12	15								
Gal. a 1200 rpm	2,2	2,5	3,2	3,8	4,7								
Torque (N.m) <sup>(1)</sup>	11	13	16	19	24								
Nom. Power(CV) <sup>(2)</sup>	1,5	1,7	2,1	2,5	3,1	300	3000	3500	150	175	1/2" BSP	1/2" BSP	3,6

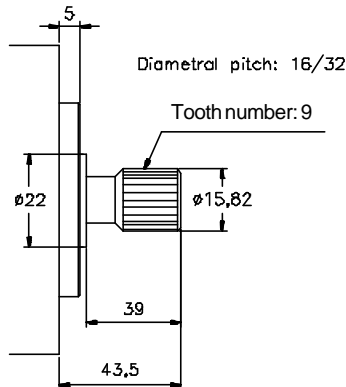
- (1) Theoretical Torque in N.m at 100 Bar.
  - (2) Nominal Power in H.P. at 100 Bar and 1000 r.p.m.
  - (3) For pressures lower of 100 bar, the maximum speed can increase until 20%
- Flow and power diagrams, see corresponding pump



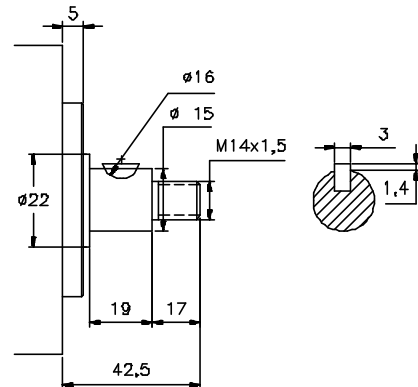
**Nº 1 shaft**



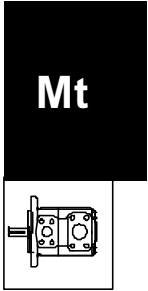
**Nº 2 shaft**



**Nº 3 shaft**



Enquire about other types of shafts



# ORDERING CODE

Model No. **MD4C - 075 - 1 - N - 00 - C 1 02 ..**

Series external drain

Nominal flow

(torque)	0,39 Nm/bar
027	(0,45 Nm/bar)
031	(0,55 Nm/bar)
043	(0,74 Nm/bar)
055	(0,93 Nm/bar)
067	(1,13 Nm/bar)
075	(1,27 Nm/bar)
100	(1,56 Nm/bar)

Type of Shaft

- 1 = Keyed (SAE B)
- 2 = Keyed (non SAE)
- 3 = Splined (SAE B)
- 9 = Special (non SAE)

Rotation

N = Bi-directional

Modification

Port

- connections
- 1 5/16" UNF
  - 9/16"-18 UNF Drain
  - 02 = 4 Bolt Flange
  - 3/8"-16 UNC Threaded
  - 9/16"-18 UNF Drain
  - 03 = Threaded Port 3/4" BSP
  - 3/8" BSP Drain
  - 04 = 4 Bolt Flange
  - 3/8-16 UNC Threaded
  - 3/8" BSP Drain
  - M4 = 4 Bolt Flange
  - Metric Threaded M10x20
  - 3/8" BSP Drain

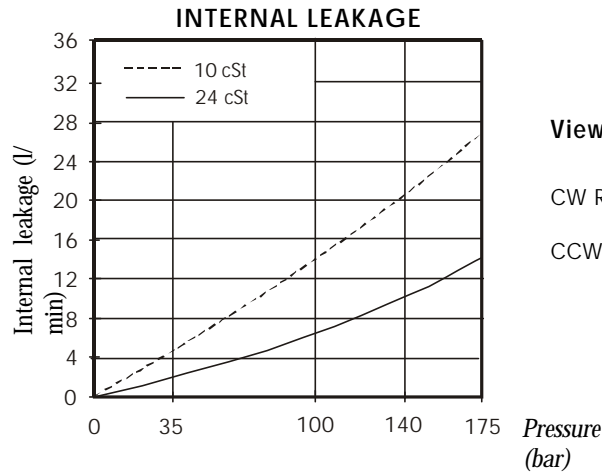
Seal Class

1 = 1

Desing letter

Porting combination

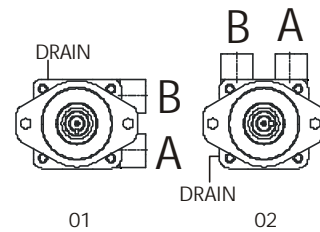
- 01 = Side ports (right/left)
- 02 = Side ports (up/down)



View from shaft end:

- CW Rotation A = inlet, B = outlet
- CCW Rotation A = outlet, B = inlet

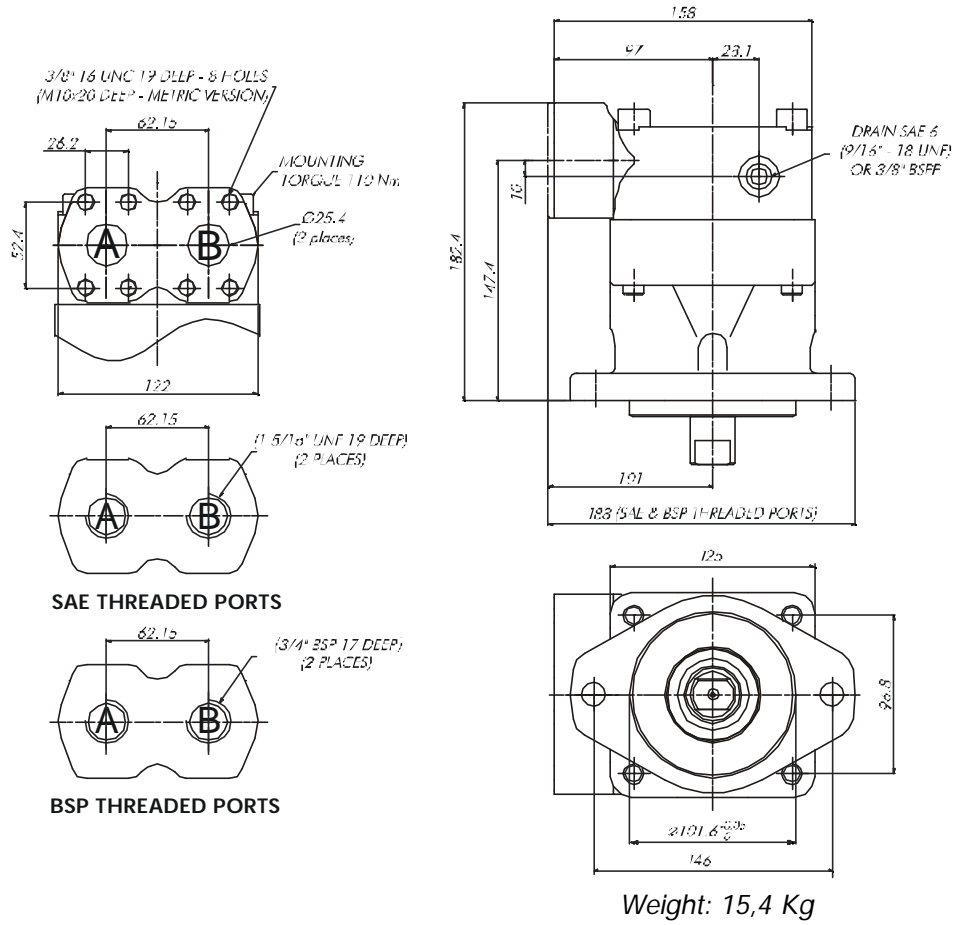
Porting combination



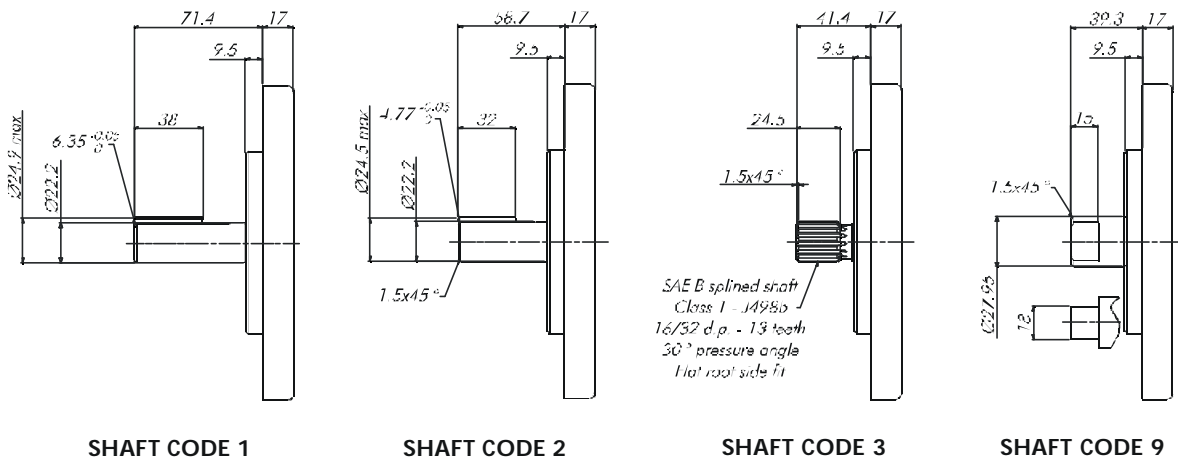
# OPERATING CHARACTERISTICS (24 cSt)

Model	Volumetric displacement (Vi) cc/rev	Input flow at n = 2000 RPM		Torque T at n = 2000 RPM	Power output at n = 2000 RPM
		Theoretical	at 175 bar ? p	at 175 bar ? p	at 175 bar ? p
		l/min	l/min	Nm	kW
MD4C - 024	24.4	49.0	63.0	60.5	12.7
MD4C - 027	28.2	56.0	70.0	70.0	14.7
MD4C - 031	34.5	69.0	83.0	86.8	18.0
MD4C - 043	45.5	93.0	107.0	120.0	25.1
MD4C - 055	58.8	118.0	132.0	149.0	31.2
MD4C - 067	71.1	142.0	156.0	170.0	35.6
MD4C - 075	80.1	160.0	174.0	198.0	41.5

# PORT CONNECTIONS



# SHAFT TYPE



Enquire about other shaft type

