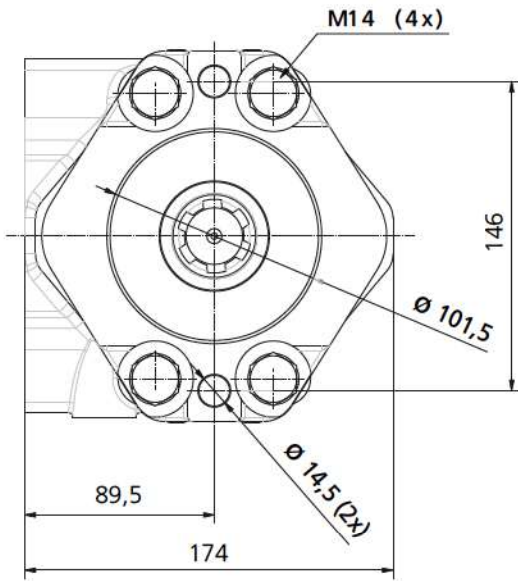


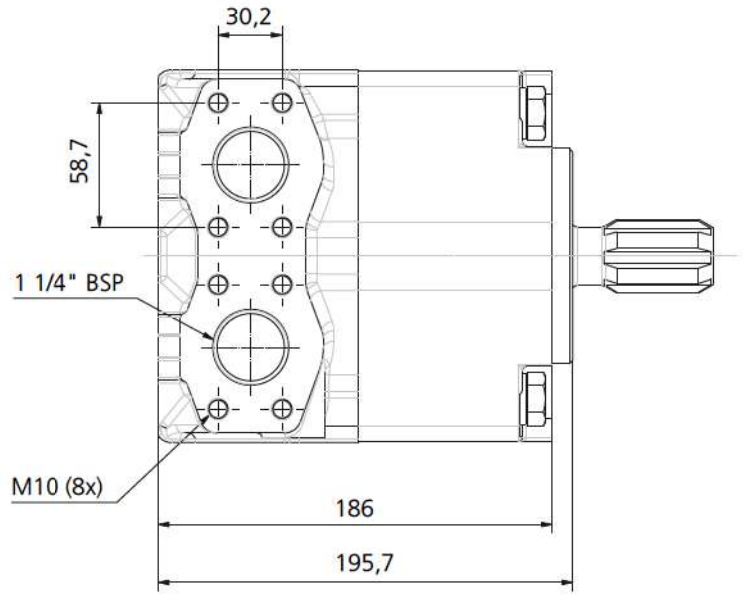
DIMENSIONS, SHAFTS & PORT CONNECTIONS

DIMENSIONS IN MILLIMETERS. 1" = 25,4 mm

PORT CONNECTIONS

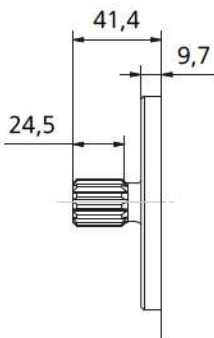


Flange 101-2 ISO 3019-1



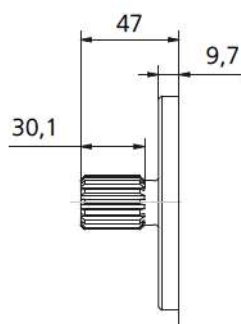
Port ISO 6162-1 P32M

SHAFT TYPE



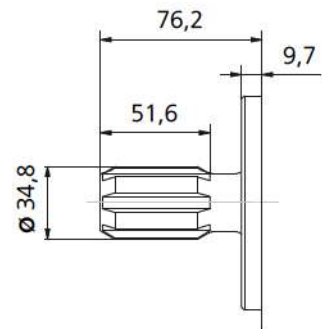
N°3 Shaft

SAE B Splined shaft 1-J498b
16/32 d.p. - 13 teeth
30° pressure angle
flat root side fit



N°73 Shaft

Splined shaft
16/32 d.p. - 15 teeth
30° pressure angle
flat root side fit



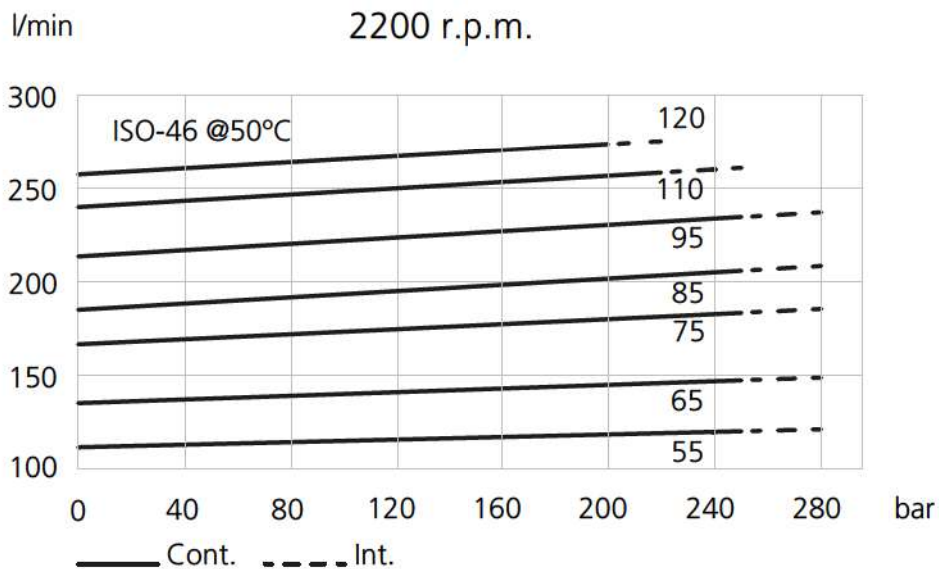
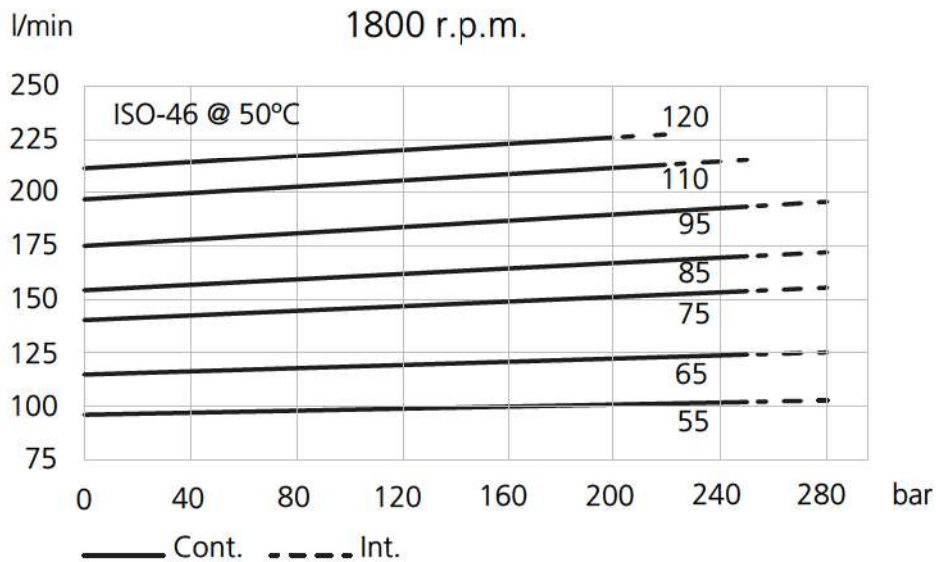
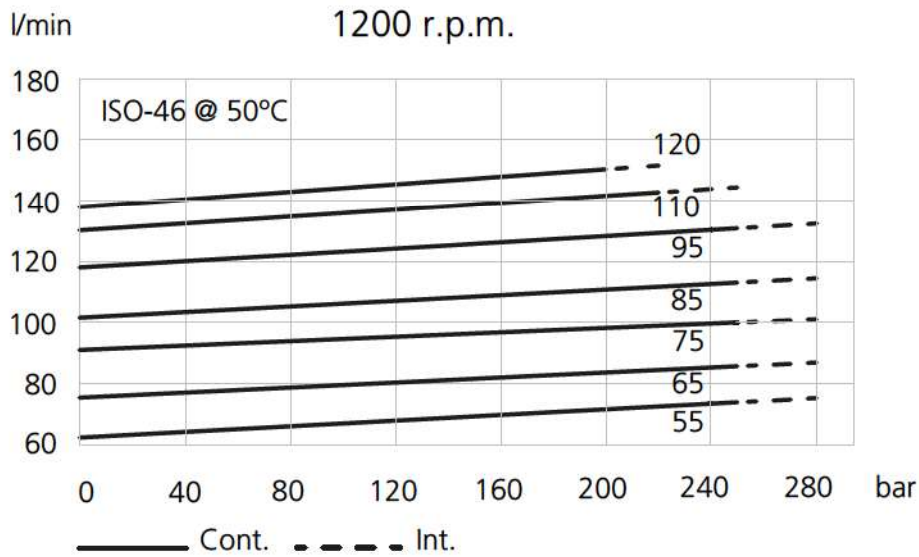
N°52 Shaft

PTO Shaft
ISO/R 500

ADDITIONAL SHAFT CODES: SEE ON PAGES 114-118

PERFORMANCE CURVES - OIL VISCOSITY : 24 CST (45°)

DATA SHEET



PERFORMANCE CURVES - OIL VISCOSITY : 24 CST (45°)

